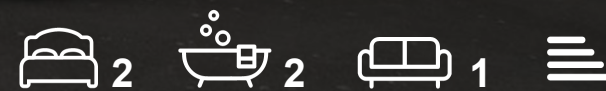




10 kings cliff Court Lower Kings Cliffe
St. Helier, Jersey, JE2 3GS

£690,000



10 kings cliff Court Lower

St. Helier, Jersey, JE2 3GS

This exceptional, spacious penthouse apartment offers an impressive living environment within an exclusive over-55s development, designed for comfort, relaxation, and entertaining.

The expansive living room is filled with natural light, creating an inviting and airy atmosphere. There is also a fully equipped kitchen, featuring appliances and ample storage, making it ideal for both everyday cooking and hosting guests.

The bedroom accommodation is equally impressive, with a generously sized primary bedroom that includes a spacious walk-in closet, offering abundant storage for clothing and personal items. The bathrooms are finished to a high standard, with the En-suite bathroom in the primary suite providing a luxurious retreat, complete with modern fittings and elegant design elements.

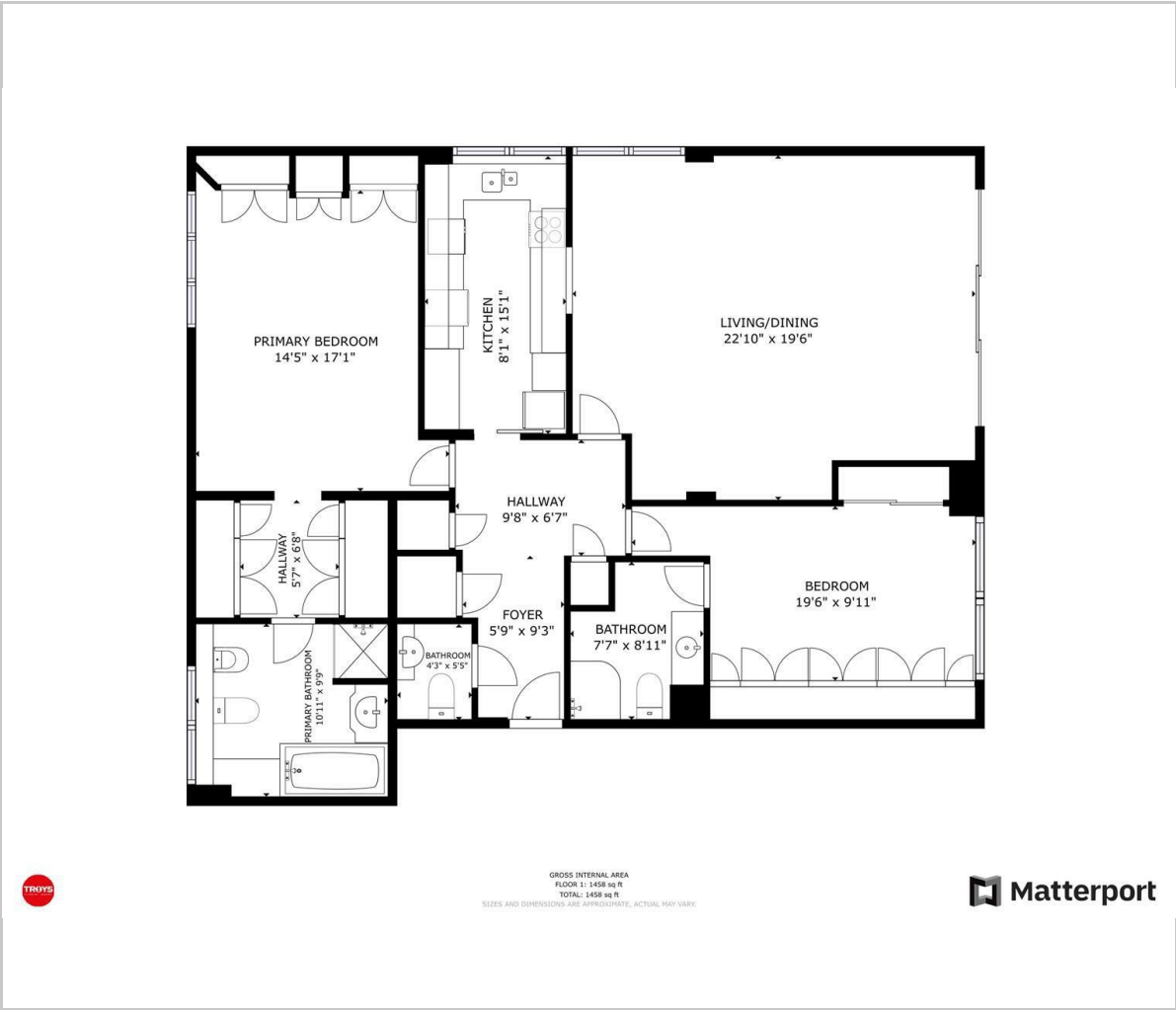
One of the standout features of this property is the private balcony, accessible from the living room, which offers stunning panoramic views over St. Helier. This outdoor space is perfect for relaxing or simply enjoying the scenery. Additionally, the apartment benefits from a double garage, providing secure parking for two vehicles and additional storage space. With lift access to the residence, convenience and comfort are assured in this luxurious home.

Services Chgs





Floor Plan



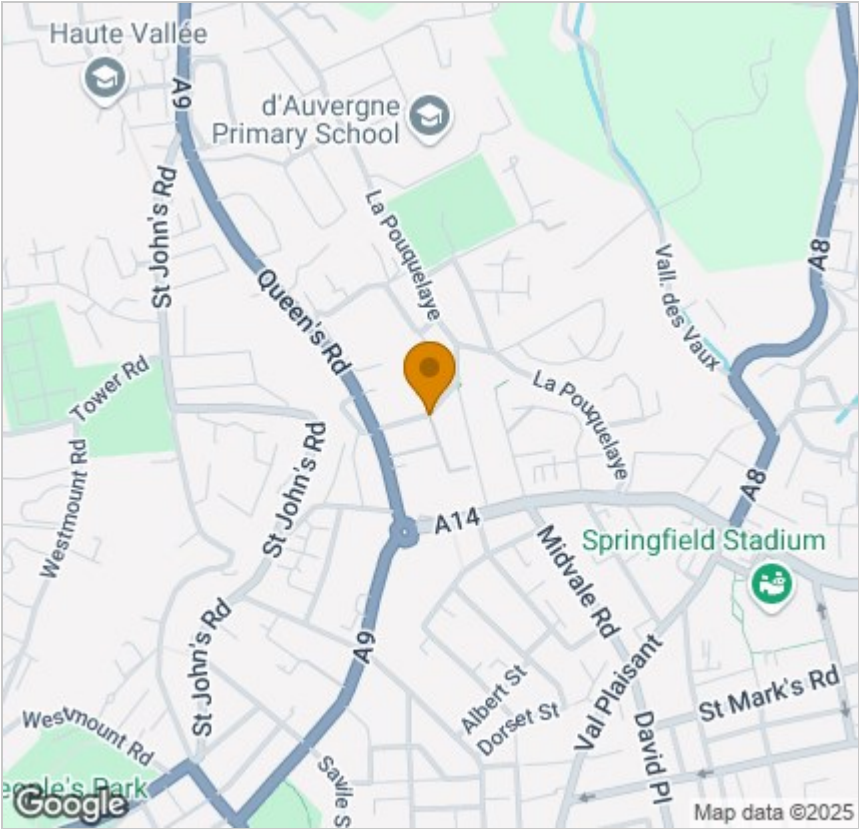
Viewing

Please contact our Troys Estate Agency Ltd Office on 01534 607070 if you wish to arrange a viewing appointment for this property or require further information.

These particulars, whilst believed to be accurate are set out as a general outline only for guidance and do not constitute any part of an offer or contract. Intending purchasers should not rely on them as statements of representation of fact, but must satisfy themselves by inspection or otherwise as to their accuracy. No person in this firms employment has the authority to make or give any representation or warranty in respect of the property.

10 Sand Street, St Helier, Jersey, JE2 3QF
Tel: 01534 607070 Email: duty@troysjsy.com

Area Map



Energy Efficiency Graph

